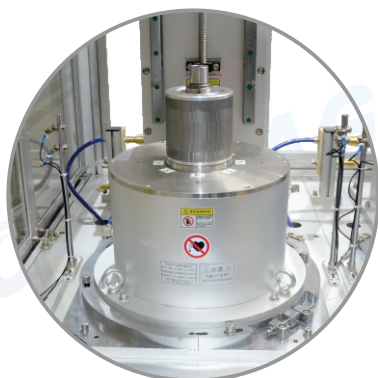


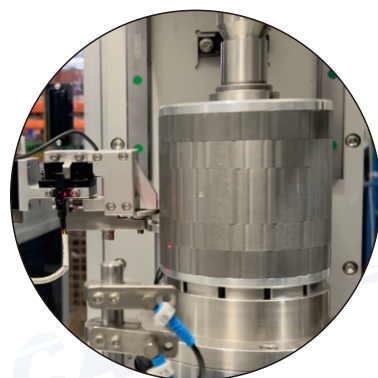
Overall Magnetization of Electric Vehicle Motors Flux Measurement Magnetic Field Distribution Test Equipment

Introduction

This equipment adopts the program of rotor first non-magnetic assembly and then magnetization test as a whole, which has high production efficiency, easy assembly, high safety, and achieves the full inspection of product magnetization test.



Integral magnetization,
flux measurement



Magnetic Field Distribution
Measurement

充磁、退磁、测量磁

我们能

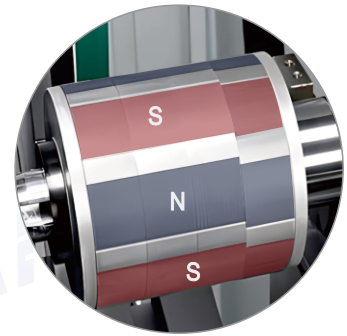
Magnetizing, Demagnetizing, Magnetic measurements, All we can

Introduction

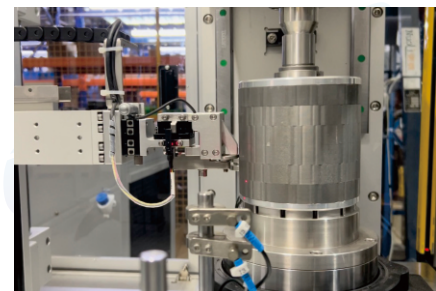
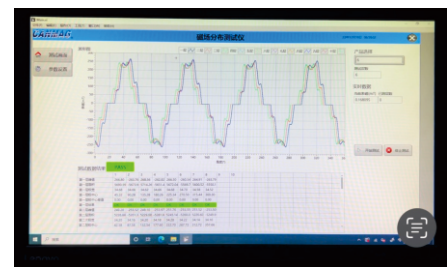
- Magnetization of the rotor as a whole in a single pass and measurement of the magnetic flux
- Multi-station design to meet different rotor size requirements
- Measurement of the magnetic field distribution in each layer of the rotor magnets
- The software plots each layer of the magnets
- Calculate the data, peak value, extreme width, area, misalignment angle, etc.
- The software makes a judgment according to the set value and gives the judgment result.
- QR code scanning creates a profile of each product
- Connection to MES system for data management

Technical Guidance

Loading Mode:	Manual or mechanical hand feeding
Deloading Mode:	Manual or mechanical hand feeding
Working Method:	Dual station rotary alternating
Action Mode:	Pneumatic and serv
Magnetization Method:	Integral Magnetization or Segmented Multi-Magnetization



Magnetic Field Distribution Test	
Range	1 T
Resolution	0.1mT
Error	1%
Test Repeatability	0.5%
Linear Module Accuracy	0.02mm
Rotary Module Accuracy	0.001°



充磁、退磁、测量磁

我们能

Magnetizing, Demagnetizing, Magnetic measurements, All we can